

BEFORE THE ILLINOIS POLLUTION CONTROL BOARD

Precision Pork, LLC - Amboy)	
(Property Identification Number)	PCB No. 25 -
12-14-29-200-008))	(Tax Certification)
)	

NOTICE

PLEASE TAKE NOTICE that I have today filed with the Office of the Clerk of the Pollution Control Board an APPEARANCE and RECOMMENDATION OF THE ILLINOIS ENVIRONMENTAL PROTECTION AGENCY, copies of which are herewith served upon you.

Precision Pork, LLC - Amboy
Carrie Pollard
2435 Bethany Road
Sycamore, Illinois 60178

Don Brown, Clerk
Illinois Pollution Control Board
James R. Thompson Center
100 West Randolph Street, Suite 11-500
Chicago, Illinois 60601

Copies also provided electronically as follows:

Illinois Department of Revenue
via email at REV.PropTaxApp@illinois.gov
101 West Jefferson
P.O. Box 19033
Springfield, Illinois 62794

ILLINOIS ENVIRONMENTAL PROTECTION AGENCY

By: 

Joshua Leopold
Assistant Counsel
Division of Legal Counsel

DATED: December 4, 2024

Illinois Environmental Protection Agency
1021 North Grand Avenue East
Post Office Box 19276
Springfield, Illinois 62794-9276
(217) 782-5544

THIS FILING IS SUBMITTED ON RECYCLED PAPER

BEFORE THE ILLINOIS POLLUTION CONTROL BOARD

Precision Pork, LLC - Amboy
(Property Identification Number
12-14-29-200-008)

)
)
)
)


PCB No. 25-
(Tax Certification)

A P P E A R A N C E

The undersigned, as one of its attorneys, hereby enters an **APPEARANCE** on behalf of Respondent,
Illinois Environmental Protection Agency.

ILLINOIS ENVIRONMENTAL PROTECTION AGENCY

By: _____


Joshua Leopold
Assistant Counsel
Division of Legal Counsel

DATED: December 4, 2024

Illinois Environmental Protection Agency
1021 North Grand Avenue East
Post Office Box 19276
Springfield, Illinois 62794-9276
(217)782-5544

THIS FILING IS SUBMITTED ON RECYCLED PAPER

BEFORE THE ILLINOIS POLLUTION CONTROL BOARD

Precision Pork, LLC - Amboy)	
(Property Identification Number)	PCB No. 25-
12-14-29-200-008))	(Tax Certification)
)	

**RECOMMENDATION OF THE ILLINOIS
ENVIRONMENTAL PROTECTION AGENCY**

The Illinois Environmental Protection Agency ("Illinois EPA") hereby files its Recommendation pursuant to Section 125.204 of the regulations of the Illinois Pollution Control Board ("Board"), 35 Ill. Adm. Code 125.204.

1. On December 18, 2023, the Illinois EPA received a request from Precision Pork, LLC - Amboy (Log number TC-151097, Exhibit A) for an Illinois EPA recommendation regarding the tax certification of water pollution control facilities pursuant to 35 Ill. Adm. Code 125.204.
2. The facility's address is: Precision Pork, LLC - Amboy
799 Cauffield Road
Amboy, Illinois 61310

The proposed water pollution control facilities in this request are located in the NE ¼ of Section 29, T20N, R9E of the 4th P.M. in Lee County, at the above street address and consist of the following livestock waste management structures:

New Gestation Barn

One (1) concrete deep swine manure pit measuring approximately 209 ft. (width) x 290 ft. (length) x 12 ft. (depth) with four (4) 6 ft. (length) x 6 ft. (width) x 12 ft. (depth) concrete pumpout pits, and approximately 60,610 sq. ft. of concrete slatted flooring covering the entire manure pit.

New Farrowing Barn

Separate shallow concrete pull plug manure pits that share walls with a total area measuring approximately 174 ft. (width) x 267 ft. (length) x 2 ft. (depth) with approximately 46,458 sq. ft. of wire mesh and concrete slatted flooring covering the entire manure pit, approximately 224 ft. (length) of 10 in. (diameter) PVC pipe used to transfer manure from the farrowing barn manure pit to the gestation barn manure pit.

Gestation Development Unit Expansion

One (1) concrete manure pit measuring approximately 80 ft. (width) x 81 ft. (length) x 8 ft. (depth) with approximately 6,480 sq. ft. of concrete slatted flooring covering the entire manure pit, three (3) concrete pumpout pits measuring approximately 6 ft. (width) x 6 ft. (length) x 8 ft (depth).

These livestock waste management facilities are used to collect, transport and/or store livestock waste prior to cropland application.

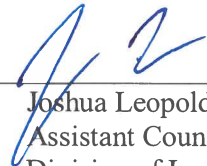
3. Section 11-10 of the Property Tax Code, 35 ILCS 200/11-10 (2022), and Section 125.200(a) of the Board's regulations, 35 Ill. Adm. Code 125.200(a), define "pollution control facilities" as:

any system, method, construction, device or appliance appurtenant thereto or any portion of any building or equipment, that is designed, constructed, installed or operated for the primary purpose of: eliminating, preventing, or reducing air or water pollution ...or treating, pretreating, modifying or disposing of any potential solid, liquid or gaseous pollutant which if released without treatment, pretreatment modification or disposal might be harmful, detrimental or offensive to human, plant or animal life, or to property.
4. In order to receive preferential tax treatment as pursuant to 35 ILCS 200/11-5 (2022), pollution control facilities must be certified as such by the Board, 35 ILCS 200/11-20 (2022) and 35 Ill. Adm. Code 125.200(a).
5. Upon receipt of a tax certification application, the Illinois EPA must file a recommendation on the application with the Board, 35 Ill Adm. Code 125.204(a).
6. Based on the information in the application and the purpose of the facility, it is the Illinois EPA's engineering judgment that the described facilities may be considered "pollution control facilities," pursuant to 35 Ill. Adm. Code 125.200(a), with the primary purpose of eliminating, preventing, or reducing water pollution, or as otherwise provided in 35 Ill. Adm. Code 125.200, and are eligible for tax certification from the Board.

WHEREFORE, the Illinois EPA recommends that the Board issue the requested tax certification.

ILLINOIS ENVIRONMENTAL PROTECTION AGENCY

By: _____


Joshua Leopold
Assistant Counsel
Division of Legal Counsel

Dated: December 4, 2024

Illinois Environmental Protection Agency
1021 North Grand Ave. E.
P.O. Box 19276
Springfield, Illinois 62794-9276
217/782-5544



ILLINOIS ENVIRONMENTAL PROTECTION AGENCY

1021 NORTH GRAND AVENUE EAST, P.O. BOX 19276, SPRINGFIELD, ILLINOIS 62794-9276 · (217) 782-3397

JB PRITZKER, GOVERNOR

JAMES JENNINGS, ACTING DIRECTOR

Memorandum

To: Mike Roubitchek, Division of Legal Counsel

From: Drain E. LeCrone, P.E., Manager, Permit Section, Division of Water Pollution Control, Illinois Environmental Protection Agency

Date: OCT 16 2024

Re: Precision Pork, LLC- Amboy
Recommendation of Tax Certification
Log No.: TC-151097
BOW ID No.: W1038110004
Property Index Number: 12-14-29-200-008

The Bureau of Water received a request on December 18, 2023 from Precision Pork, LLC, having a principal place of business at 2435 Bethany Rd., Sycamore, IL 60178, for an Illinois EPA recommendation regarding the tax certification of water pollution control facilities pursuant to 35 Il. Adm. Code 125.204. We offer the following recommendation.

The water pollution control facilities in this request include the following:

Precision Pork, LLC
799 Cauffield Rd.
Amboy, IL 61310

NE ¼ of Section 29, Township 20N, Range 9E of the 4th PM in Lee County.

Livestock waste management facilities consisting of:

New Gestation Barn: One (1) concrete deep swine manure pit measuring approximately 209 ft. (width) x 290 ft. (length) x 12 ft. (depth) with four (4) 6 ft. (length) x 6 ft. (width) x 12 ft. (depth) concrete pumpout pits, and approximately 60,610 sq. ft. of concrete slatted flooring covering the entire manure pit.

New Farrowing Barn: Separate shallow concrete pull plug manure pits that share walls with a total area measuring approximately 174 ft. (width) x 267 ft. (length) x 2 ft. (depth) with approximately 46,458 sq. ft. of wire mesh and concrete slatted flooring covering the entire manure pit, approximately 224 ft. (length) of 10 in. (diameter) PVC pipe used to transfer manure from the farrowing barn manure pit to the gestation barn manure pit.

Gestation Development Unit Expansion: One (1) concrete manure pit measuring approximately 80 ft. (width) x 81 ft. (length) x 8 ft. (depth) with approximately 6,480 sq. ft. of concrete slatted flooring covering the entire manure pit, three (3) concrete pumpout pits measuring approximately 6 ft. (width) x 6 ft. (length) x 8 ft (depth).

2125 S. First Street, Champaign, IL 61820 (217) 278-5800
115 S. LaSalle Street, Suite 2203, Chicago, IL 60603
1101 Eastport Plaza Dr., Suite 100, Collinsville, IL 62234 (618) 346-5120
9511 Harrison Street, Des Plaines, IL 60016 (847) 294-4000

595 S. State Street, Elgin, IL 60123 (847) 608-3131
2309 W. Main Street, Suite 116, Marion, IL 62959 (618) 993-7200
412 SW Washington Street, Suite D, Peoria, IL 61602 (309) 671-3022
4302 N. Main Street, Rockford, IL 61103 (815) 987-7760

Page No. 1

Tax Certification Recommendation

Log No. TC-151097

These livestock waste management facilities are used to collect, transport, and/or store livestock wastes prior to cropland application.

These facilities are further described in the enclosed applications and supporting documents.

Based on the information included in this submittal, it is our engineering judgment that the above proposed facilities may be considered "Pollution Control Facilities" under 35 IAC 125.200(a), with the primary purpose of eliminating, preventing, or reducing water pollution, or as otherwise provided in this section, and therefore eligible for tax certification from the Illinois Pollution Control Board. The Bureau of Water therefore recommends that the Board issue the requested tax certification for these facilities.

If you have any questions regarding the above, please contact Stephanie Burge-Bollero at 217/557-8666.

SAB: TC-151097_Tax Cert Recommendation_18Sept24.docx

cc: Tax Cert File

Illinois EPA - Bureau of Water - Division of Pollution Control

Title 35 Subtitle A Part 125 Tax Certifications

Illinois EPA Review Notes for:

Agency Recommendation of Pollution Control Facilities.

BOW ID #: W1038110004

Project Name: Precision Pork, LLC- Amboy

Pollution Control Facility Type:

Swine Livestock Waste Management Facility

Date application received: December 18, 2023

Property ID: 12-14-29-200-008

Reviewer: SAB

Applicant: Precision Pork, LLC

Log number: TC-151097

2435 Bethany Rd.

Sycamore, IL

Legal Description:

NE ¼ of Section 29, Twp: 20N, Range: 9E, PM:
4th

Facility: Precision Pork, LLC

799 Cauffield Rd.

Amboy, IL 61310

County: Lee

Date Control Devices installed: August 2023

Facility Contact:

Carrie Pollard

2435 Bethany Rd.

Sycamore, IL 60178

Application Signature by: Carrie Pollard

Title: Manager

Phone: 815/756-3279

Contents of Application: Tax Certification Form for Livestock Operations, Facility Map, Flow Diagram

Is there a pollutant control flow diagram? **Yes**

Is there sufficient diagrams showing the pollution control facilities? **Yes**

This facility generates the following pollutants and prevents their discharge as indicated:

Livestock waste is collected and land applied to cropland.

Physical description of pollution control facilities that ARE recommended:

Livestock waste management facilities consisting of:

New Gestation Barn

One (1) concrete deep swine manure pit measuring approximately 209 ft. (width) x 290 ft. (length) x 12 ft. (depth) with four (4) 6 ft. (length) x 6 ft. (width) x 12 ft. (depth) concrete pumpout pits, and approximately 60,610 sq. ft. of concrete slatted flooring covering the entire manure pit.

New Farrowing Barn

Separate shallow concrete pull plug manure pits that share walls with a total area measuring approximately 174 ft. (width) x 267 ft. (length) x 2 ft. (depth) with approximately 46,458 sq. ft. of wire mesh and concrete slatted flooring covering the entire manure pit, approximately 224 ft. (length) of 10 in. (diameter) PVC pipe used to transfer manure from the farrowing barn manure pit to the gestation barn manure pit.

Illinois EPA Log #: TC-151097

Page 2 of 2

Gestation Development Unit Expansion

One (1) concrete manure pit measuring approximately 80 ft. (width) x 81 ft. (length) x 8 ft. (depth) with approximately 6,480 sq. ft. of concrete slatted flooring covering the entire manure pit, three (3) concrete pumpout pits measuring approximately 6 ft. (width) x 6 ft. (length) x 8 ft (depth).

Notes:

Request for additional information sent via email to applicant on 9/16/2024. Response and supplemental information from applicant received via email on 9/17/2024.

Nothing follows – SAB - (September 18, 2024)



Illinois Environmental Protection Agency

1021 North Grand Avenue East • P.O. Box 19276 • Springfield • Illinois • 62794-9276 • (217) 782-3397

Division of Water Pollution Control

Tax Certification Form for Livestock Operations

This form's purpose is for the application for tax certification of water pollution control facilities at a livestock operation in accordance with 35 Ill. Admin. Code Part 125. For purposes of this form, a water pollution control facility ("facility") is designed, constructed, installed or operated for the primary purpose of eliminating, preventing, or reducing water pollution. Multiple facilities may be submitted using this form; however, all facilities must be located on the same livestock operation site. Separate applications must be completed for separate livestock operations.

All other types of operations (e.g. industrial, agrichemical, etc.) and air pollution control facilities must use form IL 532-0222

Please follow the instructions found throughout this form. If you need additional assistance with filling out this form, please call the Bureau of Water at 217-782-3362. Additional information about the tax certification process and applicable regulations including definitions may be found at the Agency website: www2.illinois.gov/epa/topics/forms/water-permits/tax-certification

I. Applicant Information

Company: Precision Pork, LLC

Person Authorized to Receive Certification

Name: Carrie Pollard

Street Addr: 2435 Bethany Rd.

City: Sycamore State: IL ZIP: 60178

Phone: 815-756-3279 ext:

Email: carrie.pollard@pipestone.com

Person to Contact for Additional Details

Name: Carrie Pollard

Street Addr: 2435 Bethany Rd.

City: Sycamore State: IL ZIP: 60178

Phone: 815-756-3279 ext:

Email: carrie.pollard@pipestone.com

II. Livestock Operation Information

Site Location

The location of the parcel of land where the facilities are located and given by quarter section, township, range and county must be provided. The Public Land Survey System information is available on county plat maps or at www.isgs.illinois.edu/plss

Quarter Section: NE 29 Township: 20N Range: 9E Prime Meridian: 4 County: Lee

Municipality Name: Amboy

Township Name: Marion

Street Address: 799 Cauffield Rd.

City: Amboy State: IL ZIP: 61310

Property Index Number(s): 12-14-29-200-008

Add PIN

Del. PIN

A property index number (PIN) for the parcel of land where pollution control facilities are located is required. If multiple PINs are applicable to the requested facilities, you must identify all applicable PINs in the above line and in Section III below. If you do not know your PIN you may obtain it from your records or your County's tax assessors website which may be found on the Illinois Department of Revenue website at www2.illinois.gov/rev/Individuals/Pages/IllinoisCounties.aspx

Livestock Activities: Provide descriptions of the livestock operations including type of animals at the site. (Text box will expand.)

Swine breeding and farrowing facility with ~5600 sows.

RECEIVED

DEC 18 2023

IEPA/CAS

RECEIVED
DEC 18 2023

Pollutant Sources: Identify potential sources of water pollution that are being controlled (i.e., beef feedlot runoff, swine manure, silage leachate, etc.). Provide estimated quantities of each pollutant that is produced in gallons per year. (Text box will expand.)

swine manure is controlled with the concrete deep pit facilities

Are the pollutants collected by the facility land applied?

☒ Yes ☐ No

If No, provide a description of the final disposition of the pollutants which are collected by the facility.

III. Pollution Control Facility Information

Applicant must ensure each requested pollution control facility is represented accurately in both Part A and Part B of this Section.

Part A. Operational Diagram

Using the space provided below or on a separate sheet of paper, provide a plan sketch or map of the livestock operation scaled to show the location and layout of all the requested facilities. All requested facilities must be clearly identified on this diagram. Each facility should be labeled with the pollution control facility number identified in Part B of this Section and primary dimensions to help distinguish between other requested facilities. Please include labels of roadways, downstream waterways, other important landmarks and a north seeking arrow.

☒ Check this box if the required diagram was completed on a separate sheet and attached to this application.

Part B. Pollution Control Facility Data

For each separate requested pollution control facility in this application, provide written or typed responses to all of the following questions. Use the button below the questions to add blank questions for each additional requested facility.

Pollution Control Facility Number 1

Name of pollution control facility: New Gestation

Provide a physical description including all pertinent dimensions (length, width, depth, diameter), construction materials (e.g. steel, HDPE, concrete block, etc.), and rating (e.g. 10 HP centrifugal pump). (Text box will expand.)

Concrete manure pit, 209' x 290', 12' deep with four 6' x 6', 12' deep concrete pumpouts as well as the concrete slatted floor over the manure pit

Is the requested facility used 100 percent for elimination, prevention, or reduction of water pollution?

☒ Yes ☐ No

If No, list all other uses of the facility and provide a use-percentage estimate for each of those other uses.

Original cost of the pollution control facility: \$1,300,000

Date of installation or status of installation: August 2023

Property Index Number (PIN): 12-14-29-2CD 008

Applicable Illinois EPA permit number(s): n/a

Are supplemental diagrams or construction drawings for this pollution control facility attached to the application? ☐ Yes ☒ No

If Yes, please label the diagram with the specific pollution control facility number identified above.

Pollution Control Facility Number 2Name of pollution control facility: New Farrowing

Provide a physical description including all pertinent dimensions (length, width, depth, diameter), construction materials (e.g. steel, HDPE, concrete block, etc.), and rating (e.g. 10 HP centrifugal pump). (Text box will expand.)

Concrete manure pit 174' x 267', with a 2' deep concrete pit and the wire & cast iron flooring over the manure pit.

Is the requested facility used 100 percent for elimination, prevention, or reduction of water pollution? ☒ Yes ☐ No

If No, list all other uses of the facility and provide a use-percentage estimate for each of those other uses.

Original cost of the pollution control facility: 600,000Date of installation or status of installation: August 2023Property Index Number (PIN): 12-14-29-200-008Applicable Illinois EPA permit number(s): N/AAre supplemental diagrams or construction drawings for this pollution control facility attached to the application? ☐ Yes ☒ No

If Yes, please label the diagram with the specific pollution control facility number identified above.

Pollution Control Facility Number 3Name of pollution control facility: GDU Expansion

Provide a physical description including all pertinent dimensions (length, width, depth, diameter), construction materials (e.g. steel, HDPE, concrete block, etc.), and rating (e.g. 10 HP centrifugal pump). (Text box will expand.)

GDU expansion is a 81' x 80', 8' deep concrete pit and the concrete slatted floor over the manure pit.

Is the requested facility used 100 percent for elimination, prevention, or reduction of water pollution? ☒ Yes ☐ No

If No, list all other uses of the facility and provide a use-percentage estimate for each of those other uses.

Original cost of the pollution control facility: 120,000Date of installation or status of installation: August 2023Property Index Number (PIN): 12-14-29-200-008Applicable Illinois EPA permit number(s): N/AAre supplemental diagrams or construction drawings for this pollution control facility attached to the application? ☐ Yes ☒ No

If Yes, please label the diagram with the specific pollution control facility number identified above.

Click "Add a Facility" to add another set of facility questions for each requested facility. A number will automatically be assigned to the additional facility. Please use this number when labeling facilities in the diagram required in Part A of this Section. Handwritten submittals must also include one set of questions per requested pollution control facility. Use the "Delete last Facility" button to remove excess questions.

Add a facility

Delete last facility

IV. Discharge Point Locations and Receiving Waters

Provide a written description of the surface water drainage characteristics of the operation which may convey wastewater or polluted stormwater runoff from the facility to downstream waterways. Identify the location(s) on the property at which runoff or surface discharge leaves the property.

All water from the facility would flow off roofs and away from the building. Then it would enter a designed storm water collection system that would funnel surface water drainage to one of two on site retention ponds. Both ponds have outlets that would allow for drainage to the drainage ditch immediately to the south. All wastewater from manure is captured via the deep pit, so no contaminated discharge leaves the property.

Identify local ditches, streams, rivers, ponds or lakes that may receive wastewater or polluted stormwater runoff from the operation. Also identify any named waterways that are immediately downstream from the local waterway.

The nearest waterway would be the drainage ditch 686' to the south of the facility. The nearest named waterway would be the Green River, ~2.3 miles to the south of the facility. All wastewater from manure is captured via the deep pit, so no contaminated discharge should leave the property. Additionally, the farm has a plan to stop discharge from reaching waters of the state should an emergency occur.

V. Approvals of Application and Signature

The information on this form and attachments is submitted in accordance with the Illinois Property Tax Code, as amended, and to the best of my knowledge is true and correct.

Any person who knowingly makes a false, fictitious, or fraudulent material statement, orally or in writing, to the Illinois EPA commits a Class 4 felony. A second or subsequent offense after conviction is a Class 3 felony. (415 ILCS 5/44(h))

Carrie Pollard

Printed Name

Technical Services Mgr.

Title

Carrie R. Pollard

Signature

12-14-2023

Date

VI. Submittal of Your Application

Completing this Form: The absence of information requested in this form may result in denial of your application for tax certification. If information is omitted, Agency staff will determine when and if such information or data is essential and may contact you to obtain this information to complete its review. This application form may be completed and stored locally in electronic form for future printing. Electronic submittal or email submittal of this form is not authorized. If handwritten, the form must be legibly completed.

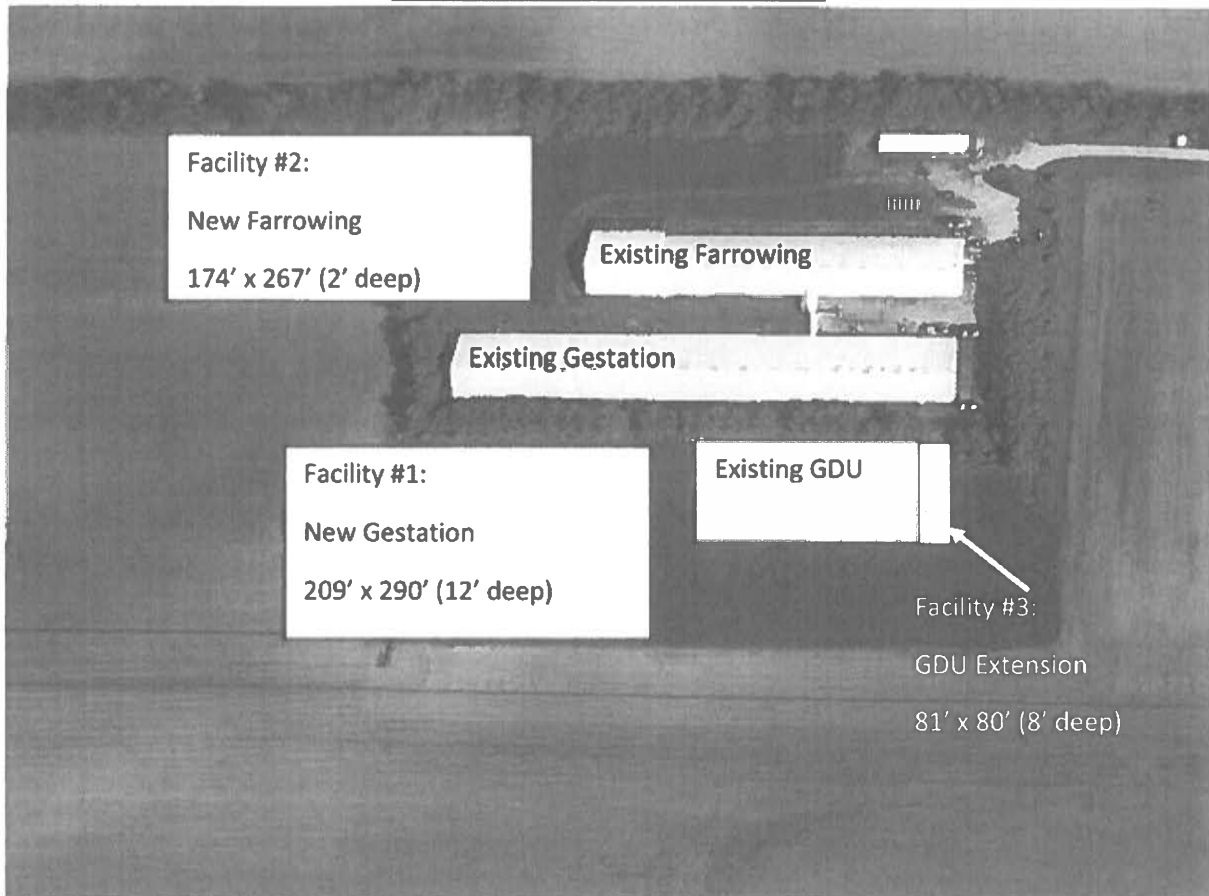
Attachments: Please only send attachments on 8.5" x 11" paper, do not send 11" x 17" sheets.

Please mail the completed and signed form and necessary attachments to:

Illinois Environmental Protection Agency
Division of Water Pollution Control, Mail Code #15
Attention: Permit Section
1021 North Grand Avenue East
P.O. Box 19276
Springfield, Illinois 62794-9276

Precision Pork, LLC

Pollution Control Application



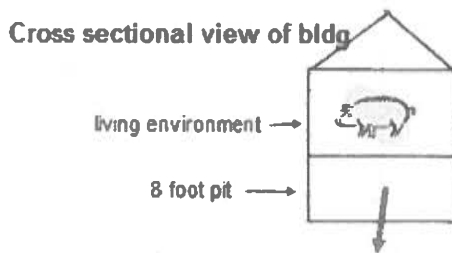
Application for Pollution Control Facility

FLOW DIAGRAM

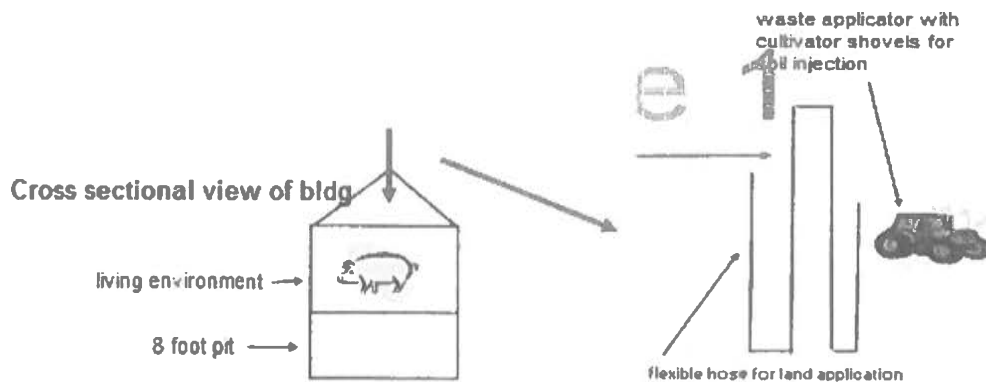
Precision Pork, LLC

Concrete manure pits under these swine buildings should eliminate any pollution. The parts of the structure would be the slatted concrete floor, the pit itself, and associated structural components (beams, columns, etc.).

Manure travels from the pig, vertically through the concrete slatted floor into the 2', 8' or 12' deep concrete pits for the various buildings. The farrowing 2' deep pit is connected to the gestation barn via a PVC sewer line drain that gravity drains the 2' pull plug pits. Manure can be manually pumped between pits to allow for increased storage.



Two to three times per year, that manure is then pumped via dragline or tankers & injected directly into nearby farmland for nutrient values.



Burge-Bollero, Stephanie

From: Burge-Bollero, Stephanie
Sent: Monday, September 16, 2024 4:27 PM
To: carrie.pollard@pipestone.com
Subject: Precision Pork, LLC Tax Certification Request

Good Afternoon,

I am in the process of reviewing the Tax certification request for a pollution control facility for Precision Pork, LLC swine farm located near Amboy in Lee County (TC-151097). I am reaching out to request additional information needed for the review of this project.

-Please indicate for the structure identified as "New Farrowing" if the shallow pit is located below the entire barn footprint or if there is more than 1 pit of different dimensions. If composed of separate pits please indicate the number of pits and please describe each pit in detail including dimensions, materials of construction, and attendant components. Please note that only the collection pits located under the livestock operations qualify as a pollution control facilities unless additional explanation of how such areas primary purpose is to eliminate, prevent, or reduce water pollution.

-The narrative in the flow diagram indicates that manure is transferred from the farrowing barn to the gestation barn via a PVC sewer drain. Please provide the length and diameter of this PVC pipe if you would like to include it in your certification request.

-For the structure identified as "GDU Expansion" please indicate if there are pumpout pits in this expansion area. If pumpout pits are present in this expansion area, please indicate the number of pits and describe them in detail including dimensions, materials of construction, and attendant components.

When providing additional information regarding this request please reference the log number TC-151097. Please just let me know if you have any questions. I look forward to hearing from you soon.

Thank you,

Stephanie Burge-Bollero

Life Sciences Career Trainee

Industrial (401/Mines) Unit, Permit Section,

Division of Water Pollution Control

Illinois Environmental Protection Agency, Bureau of Water

1021 N Grand Avenue E

Springfield, IL 62702

Stephanie.Burge-Bollero@illinois.gov

Phone (217)557-8666

Burge-Bollero, Stephanie

From: Carrie Pollard <Carrie.Pollard@pipestone.com>
Sent: Tuesday, September 17, 2024 3:35 PM
To: Burge-Bollero, Stephanie
Subject: [External] RE: Precision Pork, LLC Tax Certification Request -TC-151097
Categories: To Do

See notes below.

If you have additional questions, please feel free to contact me.



Carrie Pollard
Technical Services Manager
Phone: 815-757-9201
Office: 815-756-3279
Address: 3301 Resource Parkway, Suite 1; Dekalb, IL 60115
Pipestone.com

From: Burge-Bollero, Stephanie <Stephanie.Burge-Bollero@Illinois.gov>
Sent: Monday, September 16, 2024 4:27 PM
To: Carrie Pollard <Carrie.Pollard@pipestone.com>
Subject: Precision Pork, LLC Tax Certification Request

This email came from outside the organization

Do not open attachments or click links unless you recognize the sender's email address and know the contents are safe.

- Pipestone IT Helpdesk

Good Afternoon,

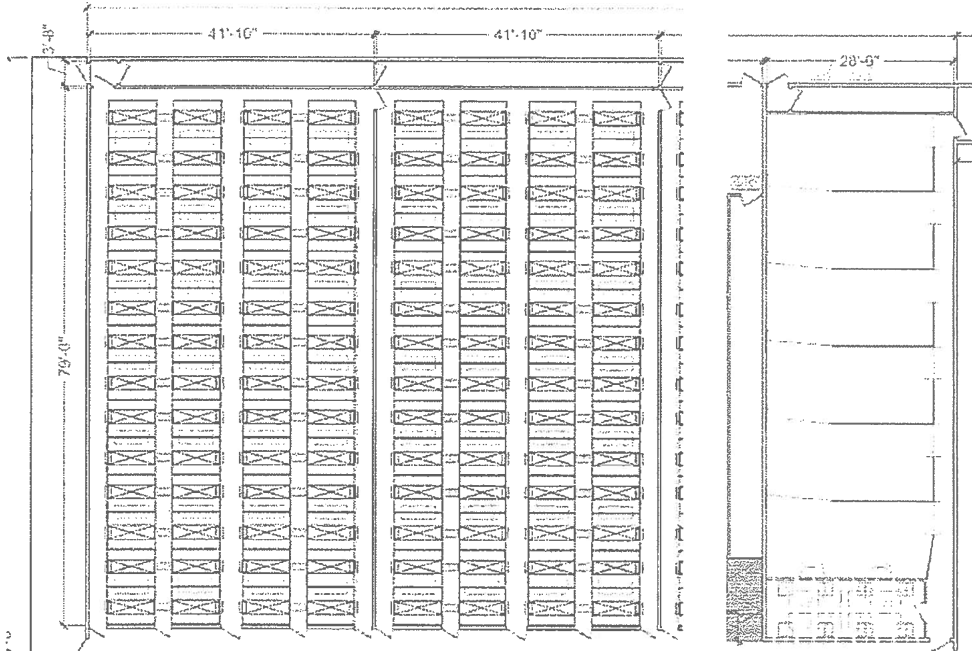
I am in the process of reviewing the Tax certification request for a pollution control facility for Precision Pork, LLC swine farm located near Amboy in Lee County (TC-151097). I am reaching out to request additional information needed for the review of this project.

-Please indicate for the structure identified as "New Farrowing" if the shallow pit is located below the entire barn footprint or if there is more than 1 pit of different dimensions. If composed of separate pits please indicate the number of pits and please describe each pit in detail including dimensions, materials of construction, and attendant components. Please note that only the collection pits located under the livestock operations qualify as a pollution control facilities unless additional explanation of how such areas primary purpose is to eliminate, prevent, or reduce water pollution.

Correct, it is technically several different pits, but they share walls. All pits are concrete with concrete or wire mesh floors over them.

10 pits under the farrowing rooms themselves: each 41'10" x 79'

1 pit under the holding area: 28' x 79'

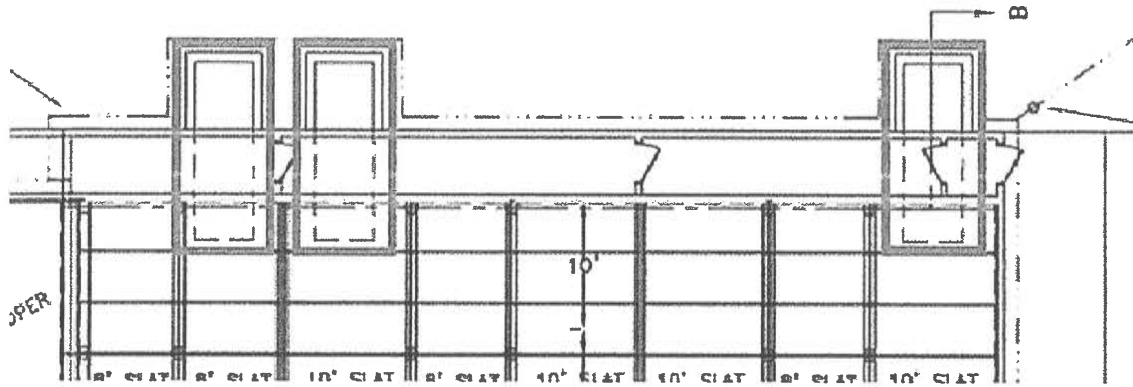


-The narrative in the flow diagram indicates that manure is transferred from the farrowing barn to the gestation barn via a PVC sewer drain. Please provide the length and diameter of this PVC pipe if you would like to include it in your certification request.

10" pipe of ~224' of PVC drain pipe. It runs the width of the west end of the farrowing building (174') , and then turns the corner to go around back to the end of the old gestation building and connects at the west end there.

-For the structure identified as "GDU Expansion" please indicate if there are pumpout pits in this expansion area. If pumpout pits are present in this expansion area, please indicate the number of pits and describe them in detail including dimensions, materials of construction, and attendant components.

Yes, there are 3. Each are 6' x 6', 8' deep. All made out of concrete.



When providing additional information regarding this request please reference the log number TC-151097. Please just let me know if you have any questions. I look forward to hearing from you soon.

Thank you,

Stephanie Burge-Bollero

Life Sciences Career Trainee

Industrial (401/Mines) Unit, Permit Section,

Division of Water Pollution Control

Illinois Environmental Protection Agency, Bureau of Water

1021 N Grand Avenue E

Springfield, IL 62702

Stephanie.Burge-Bollero@illinois.gov

Phone (217)557-8666

State of Illinois - CONFIDENTIALITY NOTICE: The information contained in this communication is confidential, may be attorney-client privileged or attorney work product, may constitute inside information or internal deliberative staff communication, and is intended only for the use of the addressee. Unauthorized use, disclosure or copying of this communication or any part thereof is strictly prohibited and may be unlawful. If you have received this communication in error, please notify the sender immediately by return e-mail and destroy this communication and all copies thereof, including all attachments. Receipt by an unintended recipient does not waive attorney-client privilege, attorney work product privilege, or any other exemption from disclosure.

STATE OF ILLINOIS

COUNTY OF SANGAMON

)
)
)
)
)

CERTIFICATE OF SERVICE

I, the undersigned attorney at law, hereby certify that I have served on the date of December 4, 2024 the attached **NOTICE**, **APPEARANCE** and **RECOMMENDATION OF THE ILLINOIS ENVIRONMENTAL PROTECTION AGENCY**, upon the following persons by causing to be mailed a true copy thereof in an envelope duly addressed, bearing proper first class postage, and deposited in the United States mail at Springfield, Illinois:

Precision Pork, LLC - Amboy
Carrie Pollard
2435 Bethany Road
Oakwood, Illinois 60953

Copies also provided electronically as follows:

Illinois Department of Revenue
via email at REV.PropTaxApp@illinois.gov
101 West Jefferson
P.O. Box 19033
Springfield, Illinois 62794

[Electronic Filing]

Clerk
Illinois Pollution Control Board
James R. Thompson Center
100 West Randolph Street, Suite. 11-500
Chicago, Illinois 60601

ILLINOIS ENVIRONMENTAL PROTECTION AGENCY

/s/ Joshua Leopold
Assistant Counsel
Division of Legal Counsel
1021 North Grand Avenue East
P.O. Box 19276
Springfield, Illinois 62794-9276
217.782.5544
217.782.9143 (TDD)